



LEADING LOCAL  
**DRIVEWAY**  
SPECIALISTS

DRIVEWAYS · PATHWAYS · PATIOS · POOL SURROUNDS



[www.imprintedconcretespecialists.com](http://www.imprintedconcretespecialists.com) | 0800 280 0489



# GET YOUR DREAM DRIVEWAY WITH ICS.

## ABOUT US.

Welcome to Imprinted Concrete Specialists – A family-run business located in the heart of Sidcup. Although we cover most of the South East and Kent areas, we're committed to play an active role in our local Sidcup community. With over 25 years' experience in the imprinted concrete installation industry, we're considered master of our trade.

## KEY BENEFITS

- △ Anything from a mansion to a townhouse – our surfaces will suit any size property.
- △ We can install your concrete surface both indoors and outdoors.
- △ Our driveways, paths or patios require minimum maintenance.
- △ We offer a lifetime guarantee on our products and services, including free resealing
- △ Our concrete surfaces inhibits the growth of moss and weeds.
- △ Dirt, oil and stains are easily removed.
- △ An ICS driveway, path or patio will add value to your property.
- △ Our pattern imprinted concrete surfaces are suitable for private and commercial surfaces.





## Any size

Anything from a mansion to a townhouse – our surfaces will suit any size property.



## Anywhere

We can install your concrete surface both indoors and outdoors.



## Lifetime Guarantee

We offer a lifetime guarantee on our products and services, including free resealing



## Wide Range

ICS offer customers a wide range of patterns and colours

### Commercial Surfaces



### Pool Surrounds





# Quality, long lasting imprinted concrete with

# ICS...



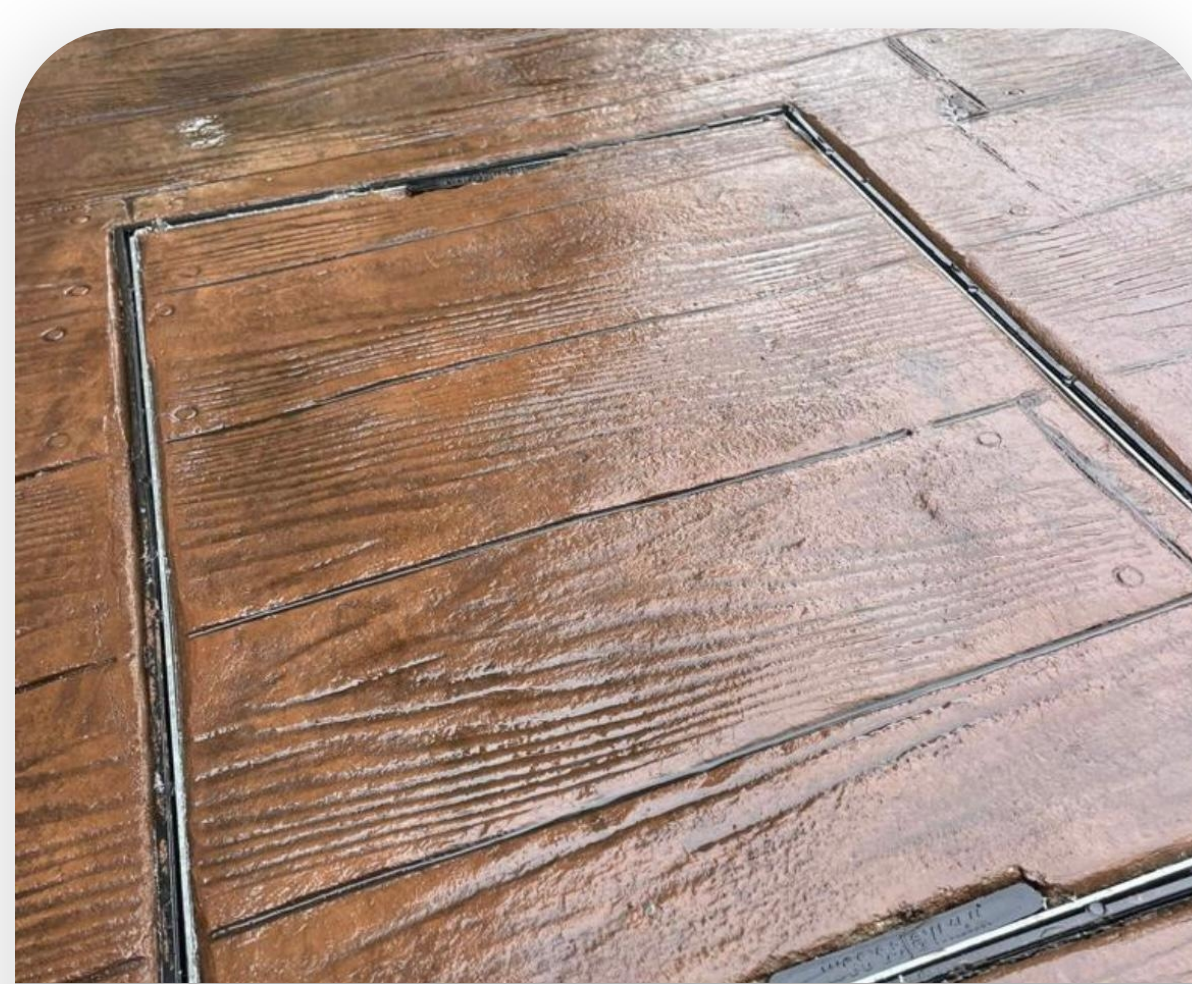
Whether you're considering a new driveway, path or patios – or simply upgrading to an existing area – do give us a call.

One of our consultants will be happy to visit you at home or business to discuss your requirements.

With a focus on absolute customer satisfaction, we visit every job where the customer needs that personal touch.

We offer customers the opportunity to view actual samples of our work, including the huge range of options available when meeting with our sales team.

We have an enthusiastic team of highly experienced engineers and advisers all willing and able to assist with any questions or concerns you may have. We firmly believe that it is impossible for a large franchise national company to provide the same level of personalised services, which our clients grown accustomed to.



#### HIDDEN MANHOLES

Hidden manholes a great way to cover an old unsightly drain with four screws these are quick & easy to release for access.



#### STEPS

We build various types of steps all being infilled with imprinted concrete, from square to half moon whatever u choose we can take care of.



#### FEATURES

Compass feature is a big statement for any driveway or patio & really sets up off that ICS installation.



#### WALLS

Walls can vary from standard bricks to concrete block walls rendered to match the property,

 Visit [www.imprintedconcretespecialist.com](http://www.imprintedconcretespecialist.com) for all services and work galleries.

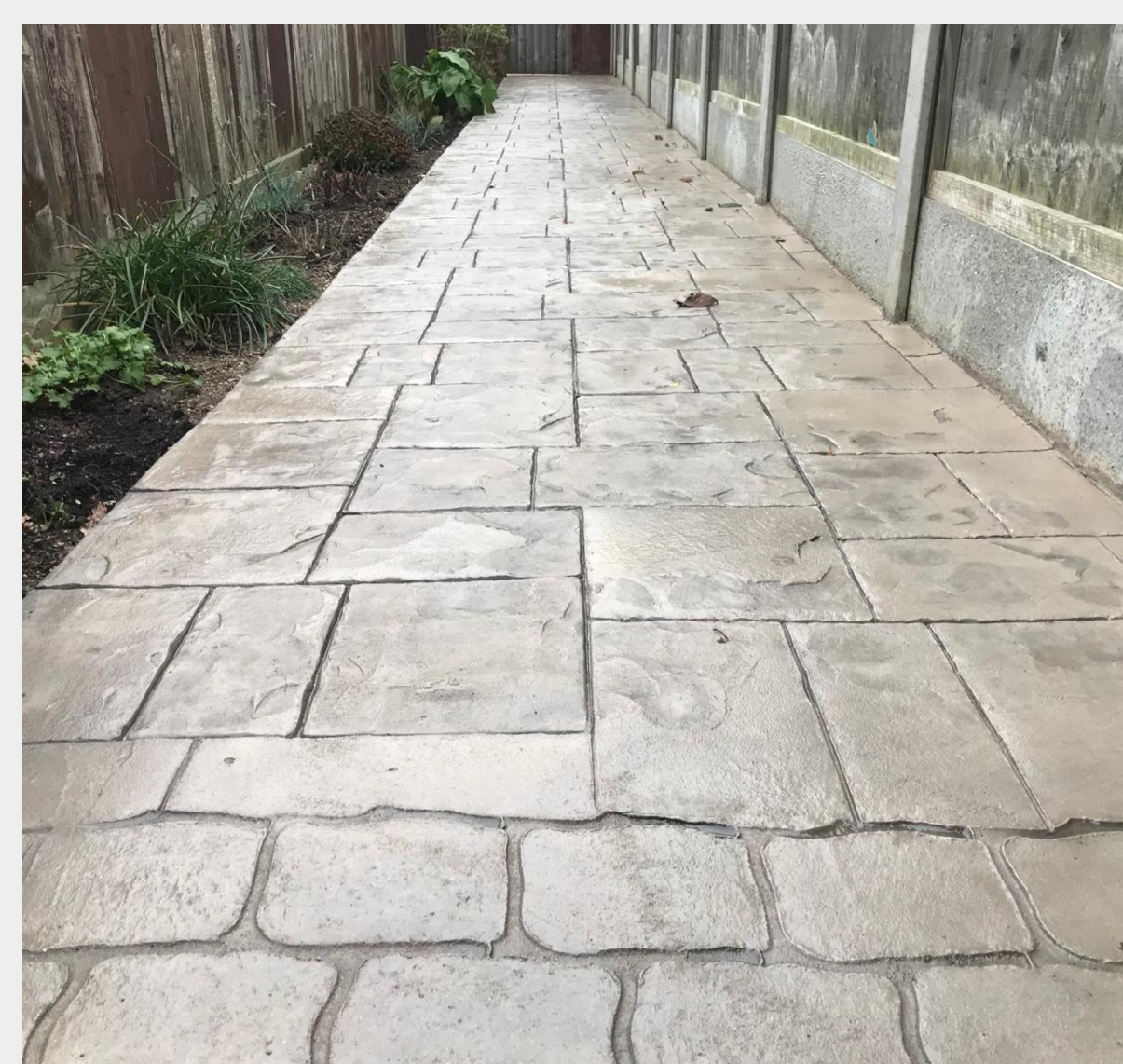
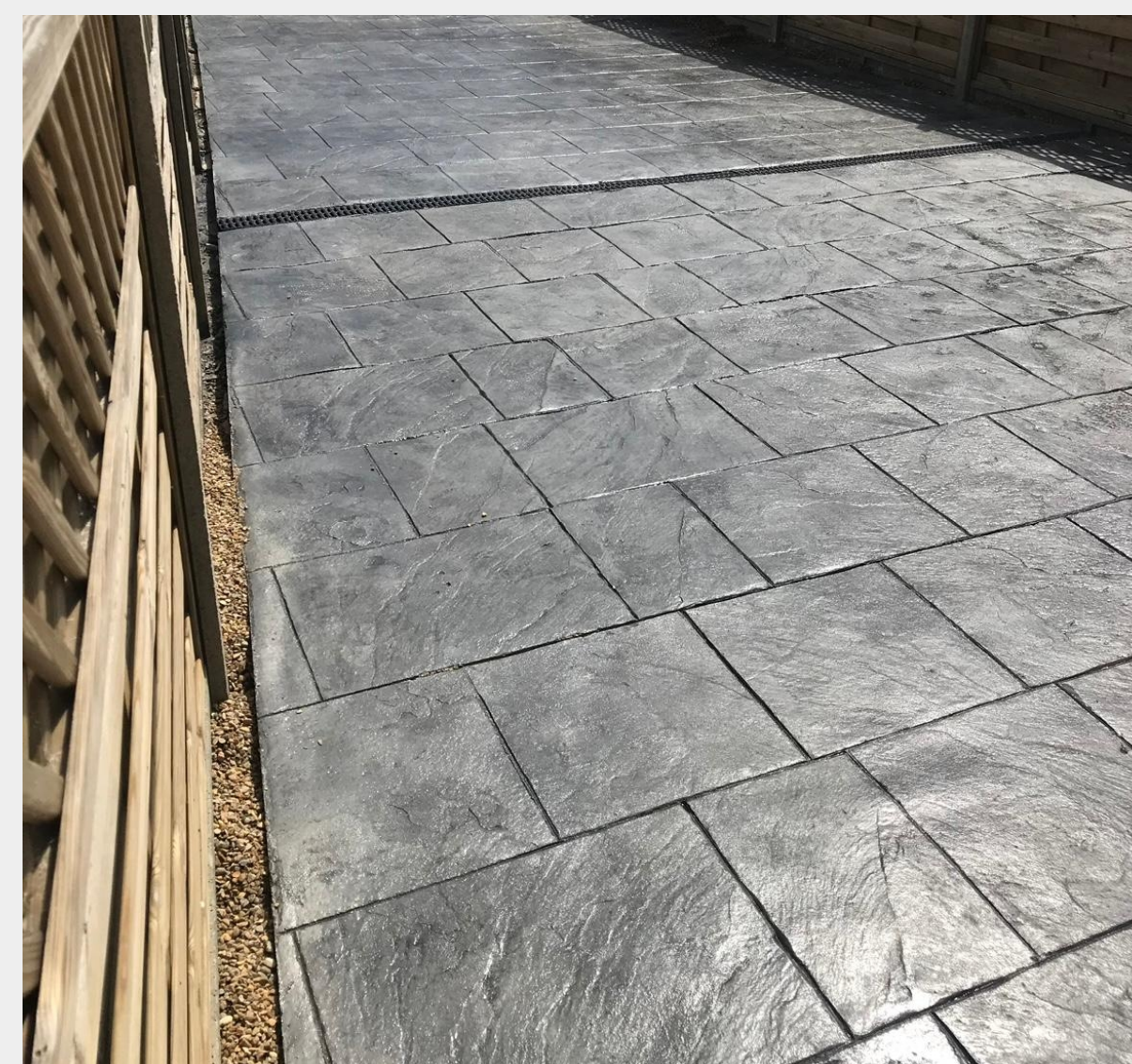




# HIGHEST OF STANDARDS

With over 25 years of experience under the belt, we're pretty confident you'll not find a better suited company out there.

## Domestic Surfaces



CONTACT US FOR A FREE QUOTE.

- △ 0800 280 0489 | WA: +447957150737
- △ [www.imprintedconcretespecialists.com](http://www.imprintedconcretespecialists.com)
- △ [sales@imprintedconcretespecialists.com](mailto:sales@imprintedconcretespecialists.com)





# STEP BY STEP PROCESS

Process Case Study  
A Beautiful Kent  
Holiday Home

## STEP ONE

**Before any work is carried out, a member of our team will visit you**

- △ Our engineer will do a full feasibility & risk assessment – including assessing ;  
  
Work access – the terrain;  
  
Water flow & drainage analysis;  
  
Any potential impact to the people and surroundings; and any requirement for specialised assets.
- △ We'll take measurements of the construction area.



- △ To discuss your specific requirements. One thing we've learnt in all the years we've been working in this industry, is that no two projects are ever the same
- △ By sitting down with you, we'll get a chance to assess your particular requirements – thus allowing us to offer you a custom solution to fit both your style and pocket.
- △ Giving you full peace of mind – and offering an opportunity to ask questions, to talk through any concerns you might have.
- △ Explaining the process from beginning to end, so you'll know exactly what to expect.
- △ If required – we'll arrange to have some samples and examples of works for you to see and get a feel of imprinted concrete.
- △ We'll discuss a time-line for completion.
- △ And finally, to set things in motion – and if needed, to schedule a starting date.



# STEP TWO

## 1. PREPERATION

On the agreed start date, a dedicated construction team will attend the location. Their primary focus will be to complete the installation to the highest of standards, as quickly as possible - ensuring little to no impact to you day-to-day routine.

Our team will begin by protecting all sensitive areas around the construction site. This includes covering walls, stairs, paved or any areas not affected by the installation.

To ensure a longer lasting concrete construction, we excavate all old paving and foundations. We then compact and level out a sub-base, with a minimum thickness of 4 inches. After boxing out any drainage, recesses and framework, a PVC membrane is placed over the prepared sub-base. This provides a clean barrier between foreign and organic matter, and the new concrete surface.



## 2. WET CONCRETE APPLICATION

The prepared areas are covered with no less than 4 inches of fibre mesh reinforced concrete. Our concrete mixture is specifically formulated to withstand the constant and extreme stress placed on such areas where heavy vehicle and people traffic are prevalent. The mixture is then agitated and levelled out, to ensure there are no cavities, weak spots or uneven areas.

## 3. SURFACE CUSTOMISATION

Having given the newly laid surface time to set, the surface is then decorated with the patterns and textures, as specified during the consultation process.

Two layers of the industrial-grade colour compound is applied – thus giving the desired appearance. Our colourants are specially formulated to resist the harmful effects of the sun and rain, allowing the original colour and texture to remain virtually unchanged.



## 4. CONTRACTION JOINTS

To avoid cracking, we add joints in the concrete. Depending on the weather, these joints allow the surface to expand and contract.

## 5. PROTECTION & SEALING

After allowing the surface to cure and absorb the colourant, a final clean-up of the surface, joints and textures are done. Finally, the area is then protected using a hard-wearing chemical sealant. This not only gives the finished surface a beautiful appearance, but it also protects it from the weather.

## 6. CLEARING UP

We pride ourselves on being an environmentally responsible company. As such, after construction, we remove and responsibly dispose of all our construction waste.



# STEP THREE

Leaving you with a beautifully crafted driveway, path or patio is not where our commitment to you ends. We offer ongoing support, maintenance and repairs on all our products.



# FREQUENTLY ASKED QUESTIONS

## **While work is ongoing, will I still be able to access my property?**

Yes – We will minimise the impact our construction work will have on your day-to-day activities. Where needed, we'll install temporary walkways so you can access the areas you need to.

## **How does Imprinted Concrete compare to other types of surface covering?**

Unlike most other forms of paving, Imprinted Concrete is strong, durable and long-lasting. There is no subsidence and it is easy to maintain and clean. It resists the growth of moss and weeds, and our lifetime reseal guarantee will ensure it stays beautiful for years to come.

## **Will it be strong enough to carry larger than normal volumes of traffic?**

Yes – Imprinted Concrete surfaces are used worldwide, and is suitable for use in both private and commercial areas. The fact that it is consistently used in very heavy traffic areas, like McDonald's drive-thrus and car parks, serves as testimony of its strength and durability.

## **Is Imprinted Concrete suitable for interior and exterior areas?**

Unlike most other forms of paving – Yes – it can be used indoors and outdoors. Imprinted concrete is strong enough to serve as your everyday driveway, where you park and drive your vehicles – but is also beautiful and functional for use as indoor floor, paths or patios. Our wide variety of colours and textures will ensure it goes with just about any feature in your home or office, durable and long-lasting. There is no subsidence and it is easy to maintain and clean. It resists the growth of moss and weeds, and our lifetime reseal guarantee will ensure it stays beautiful for years to come.

## **If damaged, can an Imprinted Concrete surface be repaired?**

Yes – Unlike many other types of surface covering, Imprinted Concrete surfaces are easily repaired and maintained. We fully guarantee that products we use, and we offer a lifetime free reseal service. Also, ICS is an approved contractor to gas and other utility providers, whereby we repair and maintain areas after utility works have been completed.

**WE DO NOT USE SUBCONTRACTORS**  
WE ARE A LOCAL BUSINESS  
WITH LOCAL PEOPLE



### **Where can I view physical samples of the available patterns, colours and textures?**

Contact our sales team where we will send you out samples and bring you samples to your home to see physical products. You can browse through our extensive range, view actual samples and work we have completed. We could also provide you with addresses where our imprinted concrete is installed.

### **What sort of ongoing maintenance does an Imprinted Concrete surface require?**

Our Imprinted Concrete requires very little ongoing maintenance. Other than you giving it a quick rinse when required, we also offer a free lifetime reseal service. On average this is done every 2 years and will ensure your driveway, path or patio remains in pristine condition.

### **What is a Imprinted Concrete?**

Imprinted Concrete is widely known as the best paving solution in use today. It's used worldwide, and offers a durable, long-lasting alternative to your conventional paving.

### **Should I be worried about my concrete driveway, path or patio cracking?**

Yes and No – Ground movement and subsidence is all part of nature. To help guard against cracks, we install expansion joints. These allow surfaces to expand and contract where needed. In the event of hairline cracks appearing, we can fix these by resealing the surface if required. ICS are one of the only companies offering a lifetime guarantee on their products and services – and a free reseal service on all their installed surfaces.

### **Is there a guarantee on Decorative Concrete surfaces?**

Yes – We offer an ongoing Lifetime Guarantee on all our products and services. We also offer a Free Lifetime Reseal services on all out installed imprinted concrete surfaces.

### **How long will it take to install my concrete driveway, path or patio?**

Depending on the workload and the area we're covering, most of our concrete installations take no longer than 1 week to complete.

**CONTACT US FOR A FREE QUOTE.**

- 📞 0800 280 0489 | WA: +447957150737
- 📧 sales@imprintedconcretespecialists.com





# WHAT OUR CUSTOMERS HAVE TO SAY ABOUT ICS



## Imprinted Driveway



We have had the whole of our front drive and garden transformed. The steps are just what we wanted and the drive looks great. All the guys that have been on site have been polite and tidy, also checked with us as the work progressed that we were happy. James had given us a payment plan and we only parted with money as each step was completed. We are really happy with the finished result and would recommend this company without hesitation.

**Ian G**



## Imprinted Commercial Driveway



Had a large patio installed for my business and there was only a 3 day window to install it. (it run smooth from start to finish)

Positive

- Punctuality, Quality, Value

**Brian B**



## Imprinted Driveway



Had James and his guys do my drive way and I must say very professional and cannot be more happy with my drive had 2 previous quotes regarding my drive 1 block paving and 1 on resin but I have zero regrets on my choice 1st class thanks guys. 🙌

**David Sp**



## Imprinted Pool Surround



Our pool area was looking old and tired so we had James come round to give us some options. We were so happy with the service and the products that we ordered a new pool surround the next day. Imprinted concrete is the best thing we have used, time wise and how long it lasts and the pool looks just as we wanted it. Thank you James, and your team. We are so happy with the service and results.

**Julie M**



△ 0800 280 0489 | WA: +447957150737  
△ www.imprintedconcretespecialists.com  
△ sales@imprintedconcretespecialists.com



### Imprinted Paving & Pathway



Completed my concrete paving and pathway for my previous holiday home and done an exceptional job. Looking to purchase a new one and will definitely use this company as the quality of work and service was outstanding. I highly recommend for anyone needing this service and quality guaranteed.

**Terry S**



### Imprinted Patio



Can't thank James and the boys enough for all their hard work. Very fair price, great communication and we couldn't be happier with the result, would highly recommend their services.

**David S**



### Imprinted Decking Area



I had this company do my decking area & im absolutely over the moon with it, from start to finish I cannot fault anything from the communication to the payment structure to the finish it was all superb & id highly recommend using them.

**Julie T**



### Front Drive & Garden



I recently used Imprinted Concrete Specialists to install a new driveway on my property. They explained everything clearly from the outset and provided sound advice and recommendations to our project. Their prices were both fair and transparent with a clear payment arrangement throughout. They communicated well with updates and informing us when the weather was against us. I'm extremely happy with the finish. Thank you James and the team for making the whole process a stress free one. Would highly recommend. Alex

**Alex L**



DRIVEWAYS · PATHWAYS · PATIOS · POOL SURROUNDS



**LONDON & KENT**



## Imprinted Concrete Specialists

- △ 0800 280 0489 | WA: +447957150737
- △ [www.imprintedconcretespecialists.com](http://www.imprintedconcretespecialists.com)
- △ [sales@imprintedconcretespecialists.com](mailto:sales@imprintedconcretespecialists.com)



@imprintedconcretespecialists